



# SPORTSTEC Exchange

## *User Manual*



Because it's more than just a game

## *Table of Contents*

# **Client Member Version**

### **Welcome**

- 1 *Overview of Sportstec Exchange*
- 2 *Technical Recommendations*
  
- 4 **Connecting to Sportstec Exchange**
- 5 *Security checking of your access to Sportstec Exchange*

### **The Main Menu**

- 8 **Home Page**
- 8 *Required Videos*
- 8 *Upcoming Opponents*
  
- 9 **My Schedule**
  
- 10 **Full Schedule**
  
- 11 **The Fixture Window**
- 12 *Document Upload*
- 12 *Remove a Document*
- 12 *View or Download a Document*
- 13 *Video Upload*
- 16 *Video Transcoding*
- 16 *Video Download*
- 17 *Fixture Window Function Buttons*
- 18 *Email Match*
  
- 20 **My Profile**
- 21 *Address Book*
  
- 23 *Log Out*

# Welcome

Welcome to Sportstec Exchange - the online video exchange and management platform that is accessible anytime and any place. Sportstec Exchange is very easy to use, just follow the simple steps contained in this manual and you'll be on your way.

## Overview of Sportstec Exchange

Sportstec Exchange is a tool for exchanging video and relevant documents between Team Coaches.

Here's a quick guide on how the Exchange process works.

1. Exchange is an internet browser based application which means that you do not need proprietary software to use it. All you need is an internet connection and the authorisation of your Exchange System Administrator to register your Username & Password.
2. Exchange works on a "grouping" structure where groups are established so that information may be exchanged between members of that group only. An Administrator may only establish Supervisor groups, a Supervisor may only establish Client groups, a Client may not establish any groupings.
3. There are 3 levels of access authorisation. These are Administrator (the highest); Supervisor and Client. There is also a Guest level where selected files and/or video can be shared with a casual recipient external to your group. You will have varying levels of access and other privileges depending on your authorisation level.
4. Subject to authorisation, Exchange provides you with the ability to upload your match video and related documents to the "Exchange Library" and also to select and download match video and related documents which have been deposited (uploaded) by other authorised users.
5. You preview videos in the Exchange library by streaming them.
6. Exchange has a format conversion function which (at the discretion of the System Administrator ) can provide access to/delivery of video files in a standardised format.

## Sportstec Exchange - Version 3.0

The software version which this manual relates to is **Sportstec Exchange Version 3.0**

## *Technical Recommendations*

Sportstec Exchange is an internet based product, thus in order to have the best experience possible, we recommend an internet connection with greater than 1mbps upload and download speed. This is not mandatory, but it will make the use of the software much faster. The faster the connection, the faster the uploads and downloads will complete.

Most users find that downloads are completed much faster than uploads. This is due to the asynchronous nature of many internet connections. eg. For an ADSL connection with 7mbps download and 768kbps upload, for an identical file size, the download will complete very quickly where the upload could take 10 times longer.

If you have questions about your internet connection, contact your internet service provider or IT manager at your organisation.

We do not have specific recommendations for the physical computer because there are so many possibilities. If the computer can run the operating system without trouble, it will generally be suitable. The only important aspect to consider is the computer that you are using should have plenty of hard disk space to store the video files. Files can be as large as 4GB, so having a minimum of 10 GB of available hard drive space is recommended.

While Sportstec Exchange is not platform dependant, (because it runs in a browser,) there are specific browser and java version requirements.

### **Operating Systems:**

Mac OS X 10.5 or greater  
Windows XP  
Windows 2000  
Windows Vista  
Windows 7  
Most Linux distributions

### **Browser:**

Firefox 3.0 or greater  
Safari 3.0 or greater  
Internet Explorer 7 or greater

### **Java:**

Windows XP, 2000, Vista and 7 : Java 1.6.0\_16 or greater. This is otherwise known as Version 6 update 16. This can be downloaded at [www.java.com](http://www.java.com).

Mac OS X 10.5 and Mac OS X 10.6 : Java 1.6\_15 or greater. This is otherwise known as Version 6 update 15. To update Java on the Mac, run Software Update under the Apple menu in the upper left corner.

**Quicktime Browser Plugin:**

Version 7 or greater. This is installed when Quicktime Player is installed. On Windows, it may require some settings to allow the plugin to be used in the Active X controls. It is built into the Mac operating system and does not require any additional settings.

**File Transfer Protocols**

Exchange uses 2 file transfer protocols, ASPERA mode and FTP mode. We recommend the use of ASPERA mode where ever possible because ASPERA mode will make the best possible use of your available bandwidth.

You may nominate your preferred file transfer protocol in the "My Profile" routine which is accessed from the Main Menu.

## Connecting to Sportstec Exchange

Access your video exchange server :

Type the Username and Password supplied by your System Administrator. You may change your password, but not your Username, in the "My Profile" routine in the Main Menu.

Click on Login to access the application.

**Note:** These fields are case sensitive.



If you have entered details which do not match those previously set up the following error message will be displayed.

**Your login details did not match. Please try again.**

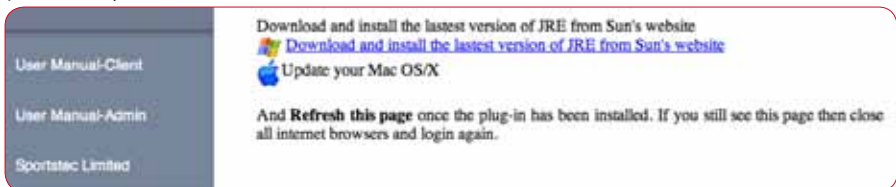
If you have forgotten your password, click on the link and enter your email address in the field provided. Exchange verifies the email address you have provided. If the email address is matched with your Username, you will receive the following message.

**Your password has been reset, please check your email**

If you have forgotten your Username, you will be required to contact your Group Supervisor to retrieve it

### Java Version Check

Each time you login, Exchange checks whether you have Java and Aspera installed and if so which version. If the system detects a compliant version of Java and Aspera, you will be directed to the Exchange Home page. If the system detects that you don't have Java installed or you have an old version, you will be prompted to install or update before you are able to proceed any further.



## Aspera Version Check



### Security checking of your access to Sportstec Exchange

During the login process, Exchange may check if the **computer** you are using is authorized for access. The Java applet (above) allows Exchange to check your computer's Apple ID for security purposes. If your Supervisor has stipulated this security requirement, Exchange not only checks your Username and Password, but will also interrogate your **computer** Apple ID to ensure that the **computer** you are using to access the web pages has been authorised. The Supervisor may authorise your access from more than 1 computer. At your first login from your computer (and each subsequent new computer if more than 1 has been authorised) you will receive the following message :

Your organization has requested that your access to the Exchange platform video will be opened after your acceptance of this certificate.

This certificate is designed to protect the video data contained in this platform. I promise not to give access to any other unauthorized party.

I certify to limit the use of the downloaded videos to my own professional needs.

I agree that any abnormal downloading activity from this video Exchange platform from this computer may involve the disabling of my access.

Insofar as this computer would be replaced, I undertake to inform the administrator to revoke certification and obtain a new certificate related to a new machine from which I would make my uploads or downloads.

I accept these terms of use and apply for the access of this computer to the video sharing platform.

Your Place:  (Optional)

In the text field illustrated, type in an identifier for your computer eg. "Office Desktop" or "Work Laptop" etc. If you attempt to login from a computer other than that which has been authorised, you will receive the following message :

**Your Mac Address is not allow to access, please contact your administrator**

Your Administrator will be able to reset the security system if you have changed your computer or authorise you for access from more than 1 computer.

When you have successfully logged in, you will be taken to the Home page. The following features will be presented in their screen locations irrespective of what page you have navigated to within the Exchange site.



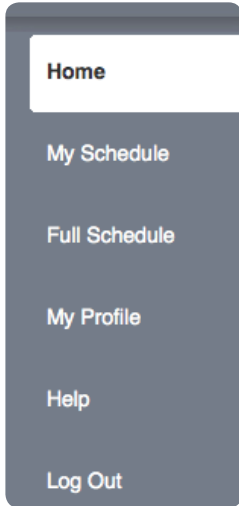
The dark colored panel at the very top of the page (numbered 1) , is available to display Team identification details. At the left of this panel is displayed the Team logo and immediately beside that the Club Name. At the right of this panel is a search field which allows you to search for specific game video or documents. You are able to search by team (lists the entire library of fixtures for that team) or by team vs team (lists only those fixtures in the library for games between those teams).

The Main Menu (numbered 2), is located in a vertical column at the left of the page.

The Title bar (numbered 3), is located immediately below the Team identification panel. In the Home page this bar displays a welcome message to the Client user, the text in this bar, in subsequent menu windows, describes the content of the panel(s) below it.

These 3 panels will be visible from all the Main Menu windows.

## The Main Menu



The **Home** page provides a quick reference to your tournament fixtures and a search function.

The **My Schedule** menu provides you with access to the tournament fixtures for your team only.

The **Full Schedule** menu provides you with access to the entire tournament fixture list.

The **My Profile** menu allows you to edit your personal profile and to establish and edit a Contacts Address book.

The **Help** menu provides access to the User Manuals and to details regarding file transfer protocols.

Click here to **Log Out** of the Exchange browser.

## Home Page

The **Home Page** is divided into 2 columns The column on the left will display the matches for which you are (or will be) required to upload video. The column on the right will display Upcoming Opponents



### Required Videos

This column will always display the next Home game to be played. It will also display any games which have **been** played for which you are required to upload video. The competition round number is displayed at the left of the Fixture Row. If you hover your cursor over this round number or in the column alongside any fixture row, the round number (or finals knockout round) will be displayed. The fixture row contains the game number of the round (in grey at the left of the row), the date the match is to be or was played, the teams and the “Video Required” alert. Once the video has been uploaded, the alert will disappear.

### Upcoming Opponents

This column will list the next 2 opponents which you are due to play in date order from first to second. When you click on the “View All” button you will be provided with a list of the last 5 games which that team has uploaded to Exchange. By default the maximum number of games available to you will be the last 5 uploaded. If you are in Round 12, assuming that your next opponent is up to date with uploading their video, you will have the games of that team from rounds 11, 10, 9, 8 & 7. If this opponent hasn't yet uploaded the game video from match 10, then you will also have the game video from round 6 available.

If a team is playing in multiple competitions concurrently, Exchange will list the last 5 games for which there is video available in date order irrespective of the competition. At the end of the season, when you have uploaded all video required and you have no Upcoming Opponents, the Home page will be empty.

While a video is being uploaded, an animated upload progression bar similar to a “barbers pole” will be displayed .



## My Schedule

Clicking on **My Schedule** will open the adjacent column to the right with a list of tournaments or competitions that **your** team only is competing in. The number of downloads remaining that you are authorised for is displayed beneath your name in the Title bar.



Select the tournament by clicking on the tournament name and the entire fixture list for your team in this tournament will be displayed.

The tournament round number is displayed at the left of each fixture row. The game number of the round is displayed coloured grey adjacent to the round number, the date the match is to be or was played, the teams and at the right of the panel will be the Videos Available or Video Required display which includes the number of videos. For those matches which have been played, the match result may also be displayed as W (win) L (lose) or D (draw) .

The Videos Available displays in 2 color formats:

Video Available 0

The background color is grey if the match was a home game and you have uploaded your video or if it was an away game it will be grey if the video is still to be uploaded.

Video Available 1

If the background colour is green, the number of video(s) for the fixture displayed are available for you to download.

Video Required 0

If you have the Video Required alert with a background colour red, **you** must upload video for the fixture for this match.

While a video is being uploaded, an animated upload in progress bar will be displayed.

Hover your cursor over a fixture row, it will highlight the game panel with a black "kevlar" background. Click on the highlighted panel to expand the Fixture Row into the Fixture Window which provides a full range of functions for the fixture. ( These functions are fully explained in the Fixture Window section of this manual).

## Full Schedule

When you select **Full Schedule** the adjacent column to the right will list the tournaments or competitions that **your** team is competing in. The number of downloads remaining that you are authorised for is displayed beneath your name in the Title bar.



Select the tournament by clicking on the tournament name and the entire Fixture List for **all** teams for the tournament will be presented in panels by Round number and in Game number order

The tournament round number is displayed at the top left of each fixtures panel. The fixtures panel contains a list of all games in the round. If you hover your cursor in the column alongside any fixture row, the round number or finals knockout round will be displayed

Each game is listed separately with the game number coloured grey at the left of each fixture row, the date the match is to be or was played, the teams and at the right of the row will be the Videos Available or Video Required display which includes the number of videos. For those matches which have been played, the match result may also be displayed as W (win) L (lose) or D (draw) .

The Videos Available displays in 2 color formats:



The background color is grey if the match was a home game and you have uploaded your video or if it was an away game it will be grey if the video is still to be uploaded.



If the background colour is green, the number of video(s) for the fixture displayed are available for you to download.



If you have the Video Required alert with a background colour red, **you** must upload video for the fixture for this match.

While a video is being uploaded, an animated upload in progress bar will be displayed.

Hover your cursor over a fixture row, it will highlight the game panel with a black "kevlar" background. Click on the highlighted panel to expand the Fixture Row into the Fixture Window which provides a full range of functions for the fixture. ( These functions are fully explained in the Fixture Window section of this manual)

## The Fixture Window

Opening the Fixture Window will display the Fixture Row at the top of the screen and expose 3 columns and 6 function buttons. If there is no video uploaded, the function button(s) in the centre column will not be visible.



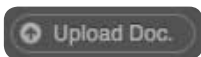
The fixture row at the top displays the selected Round, Match number, Teams and match result, and whether video (and how many) is available for download.

The column on the left contains a list of documents which have been uploaded. It also contains the function buttons to upload and/or download documents and buttons to manage your documents and videos and a facility to email selected documents and/or videos.

The centre column contains the “viewing area” with video streaming controls. The video title and duration is displayed at top left and the date on which it was uploaded at top right. The format and file size of the original video is displayed below the viewing area on the left along with a blue button to download the video in the original format . If the video has been transcoded, the transcoded format will be displayed on the right along with a green video download button for this format.

The column on the right contains thumbnail(s) of video(s) uploaded, (if there is more than 1 thumbnail of the same video, this will normally mean that the video has been uploaded in more than 1 format,) and a button to allow you to upload video. Click on a thumbnail, to load it to the viewing area in the centre column.

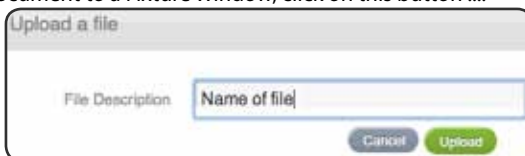
## Document Upload



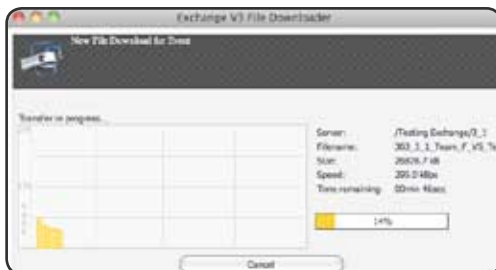
To upload a document to a Fixture Window, click on this button ....

Give the document a name ....

and navigate to the document you wish to upload and click "Upload"



A file transfer window will open to display the upload transfer rate and transfer progress.



## Remove a Document

To remove a document you have uploaded refer to **"Manage Match"** in the **"Fixture Window Function Buttons"** section below.

## View or Download a Document

Document(s) available for you to view or download will be listed in the Documents column on the left of the Fixture Window. Click on the document name to view it. To download the document, double click on the green downward pointing arrow. The document will be downloaded to your downloads folder.

Documents can only be downloaded one at a time.



A file transfer window will open to display the download transfer rate and transfer progress.

## Video Upload

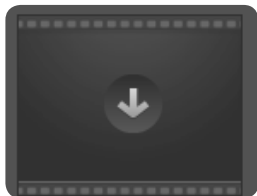
Below the thumbnails is the button which allows you to upload video.



While a video upload is in progress, the "Video Available" displays in the Home Page, My Schedule, Full Schedule and in the Fixture Window will all display an animated upload in progress bar similar to a "barbers pole".



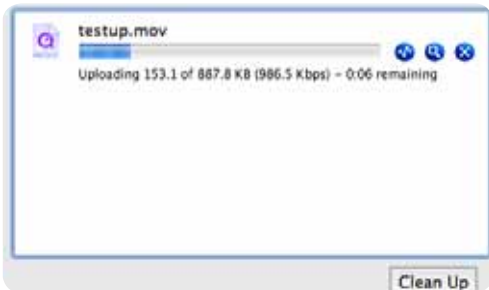
...and in the Fixture Window both the thumbnail and the viewing area screen will display a blue barbers pole.



In the event that a video uploaded is in a video codec format which is not compatible with Exchange, either for streaming or for transcoding, then the thumbnail will display the default image illustrated at left. This video will still be available for download in its original format.

Depending upon which Transfer preference you have selected in the “My Profile” section, one of the following upload processes will occur.

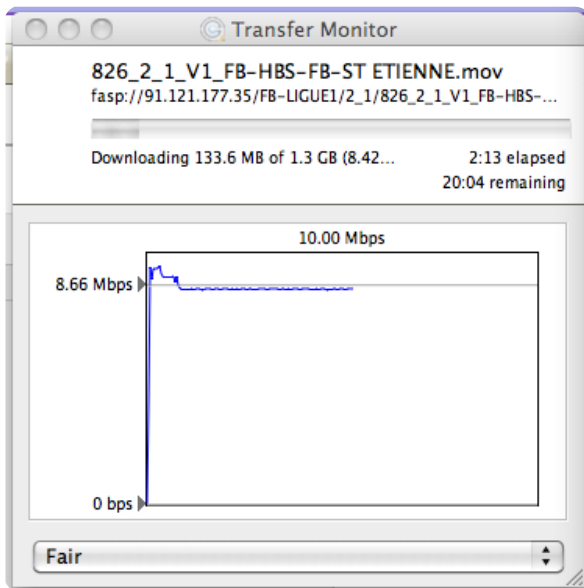
### ASPERA Mode



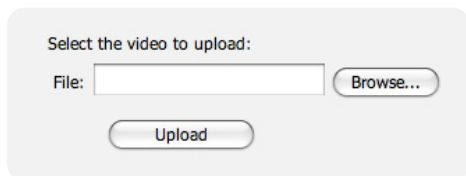
Select the “Click here upload manually” link. Navigate to your video and press the Open button.

ASPERA will open and start the upload. If the transfer is interrupted, ASPERA will automatically re-launch the transfer process for this video when Exchange is relaunched.

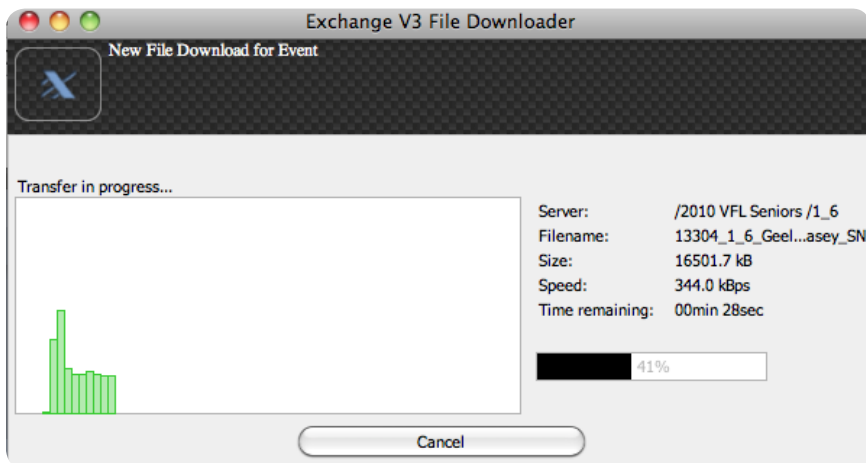
The upload is completed once the ASPERA window displays “Done” at the bottom.



## FTP Mode



Click on the Browse button and navigate to your video , then click on the Upload button. The upload of your video will start, with the opening of the "Transfer in Progress" window.



If your transfer is interrupted (bandwidth breakdown, or you deliberately halt the transfer), when you restart the transfer again, the transfer will recommence from the point at which it had been interrupted. You will be advised once the transfer is complete.

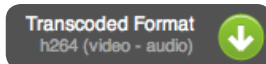
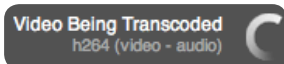
The file will be in a folder named "Sportstec's Exchange". The folder will initially be located on your desktop. We suggest you rename the folder or the file before storing it.



**ATTENTION :** Each time a video is uploaded, Sportstec servers automatically launch a duplication of the video, which will be stored on a backup server for security reasons.


## Video Transcoding


Your Exchange Administrator may elect to have all video which is uploaded to the Exchange server transcoded into 1 video codec format. If this is the case, then as soon as a video has been uploaded, (if it is in a video codec format which differs from that common format chosen by the Administrator,) Exchange will automatically transcode the original video. The image at left below will be displayed while this process is taking place and once the transcoding has been completed a green download button will be displayed.




## Video Download

During the member setup process, the Supervisor will specify a download quota for that member for the duration of the tournament. Exchange will display your available downloads quota remaining beneath your name in the Title bar of the "My Schedule" and "Full Schedule" routines.

Click on the blue download icon  and the video displayed in the viewing area will begin downloading to your computer in the original video format in which it was uploaded.

Click on the green download icon  and the video displayed in the viewing area will begin downloading to your computer in the transcoded video format.

 If the icons have a red exclamation mark attached to them, this indicates that the selected video is not available for **you** to download. This will usually mean that you have exceeded your download limit. Contact your Exchange Supervisor.

## Fixture Window Function Buttons



Manage Match

This button opens the screen which provides you with the ability to manage the Fixture Window and its contents



The bar in the top panel of the screen provides you with a quick view result tab. This will indicate the Win, Lose or Draw result in the Fixture Panel displayed on the *Home Page* and in the fixture lists in the *My Schedule* and *Full Schedule* menus.

**Note : The use of this tab is restricted to the person uploading a video or the Group Supervisor.**

The display is “Not Set” by default (no result). Click on the “Win” tab on the side which has won. (Home side at left , Visiting side at right). The losing side tab will automatically be displayed against the side which has lost. Click on Draw if the match is drawn (Even result)

In the middle panel, the video thumbnails will be displayed. **You may only delete a video** (by clicking in the **x** in the thumbnail), **if you are the video uploader**.. You may rename the video in the text box below the thumbnail.

In the bottom panel the documents will be displayed. **A document may be deleted only by an Administrator, a Supervisor or by the Uploader of the document.**

You may rename a document by using the text box in which the document name is displayed and you may restrict the availability of the document for download to your User Group only if you select Private. If you select Public, the file will be available for download by anyone who has access to that Fixture Window.

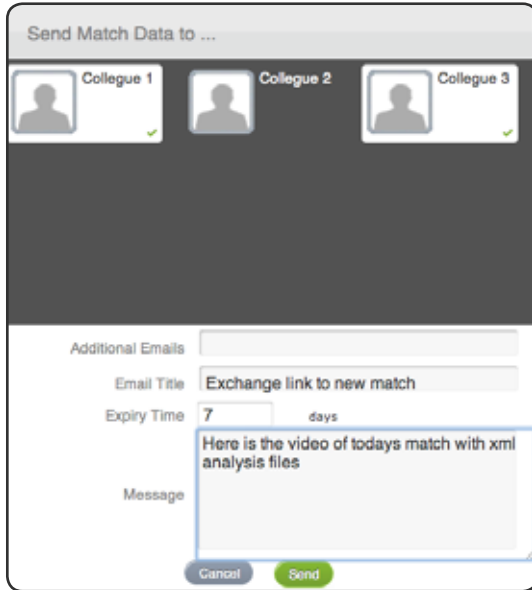
Don't forget to “Save and Close”

## Email Match



You may email a link to the Fixture Window and its contents to people who are listed in your address book.

When you click on the button, the following window will open :



Click on the thumbnail of the profile of the person or persons in your address book to select those who you want to share the Fixture Window and it's video and/or document contents with.

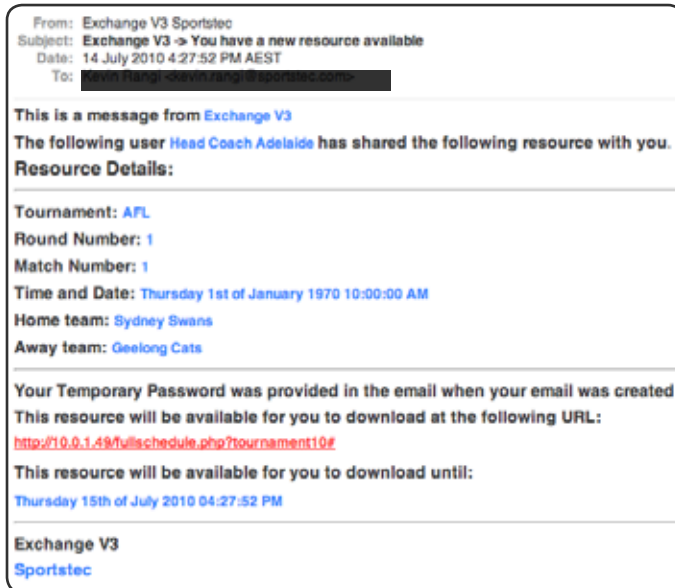
When you click on the thumbnail the selection will be highlighted and a green tick will be attached in the bottom right corner.

You may input additional email addresses (for people who are outside your existing Exchange network) separated by a comma. When you input an additional "guest" email address, by default, this address will be added to your address book.

Provide your email with a title in the text box provided, nominate a period, in days, after which the email link will expire and you may include a message.

Click the Send button

The recipients selected from the address book or a “casual recipient” who has been included through the “Additional Emails” box, will then receive an email an example of which is illustrated below :



The casual recipient will have access only to the Fixture Window which has been shared.

## My Profile

When you enter the website for the first time, go to **My Profile**. Check that the details which have been entered by the Administrator or Supervisor are correct and then complete all remaining fields in the form. Mandatory fields will be marked with a \* on a red background. Once the field has been accepted it will change to a tick symbol on a green background.

The screenshot displays the 'My Profile' page for AS Cannes Volley-Ball. The page features a dark navigation sidebar on the left with links for Home, My Schedule, Full Schedule, My Profile, Help, and Log Out. The main content area is titled 'My Profile' and contains the following fields:

- Family name: Bonny (green checkmark)
- First name: Priscar Charlie (green checkmark)
- Personal picture: A French flag icon and a 'Choose File' button with the text 'no file selected'.
- E-mail address: An empty field with a red asterisk indicating it is mandatory.
- Password (Min 8 chars): A masked field with dots.
- Confirm password: A masked field with dots.
- Mobile phone: 7634321
- Transfer preference: A dropdown menu set to ASPERA.
- Language: A dropdown menu set to ENGLISH.

A green 'Save' button is located at the bottom left of the form area.

1. It is mandatory to provide a **Family name** and **First Name**.
2. **Personal Picture** : Select "Choose File" to choose an image, then navigate to your image file. Your image must not exceed the dimensions 80x50 pixels and the file size must be less than 30 Kb. Upload the image by clicking on the "Upload" button. An image uploaded here will be displayed alongside the Members details in the Members Home Page, in an Address book and in a Teams list.
3. It is mandatory to provide a valid **e-mail address**.
4. **Password** : if you don't want to change the password provided by the Administrator or Supervisor, don't type anything in this zone. If you do, you must also confirm the change in the next field.
5. Please type your **mobile phone** number in the international format including the country code.
6. **Transfer preference** : You must ensure that the transfer protocol you specify is the same

as the transfer protocol specified by your System Administrator. We recommend the ASPERA protocol, (see page **NNN** for further information on this transfer protocol), but this option may not always be available.

7. If the **“Enable my Folder”** box is not ticked, by default the downloaded video will be stored on your desktop in a folder named **“Sportstec’s Exchange”**. If you tick it, then you can choose a new path for the file storage, by clicking on the **“Browse”** button.
8. Click **“Save”** to save your profile.

### Address Book

The Address Book provides the facility to list the contact details of your personal address group. The Address Book is used for you to select those contacts who you wish to share fixture file documents and videos with.



To add a Contact to your Address book, hover your cursor over the + symbol at the top left of the page. The background of the box will turn green. Click on the + symbol and a Contact details box, illustrated above, will open. The Contact Name and a valid email address are mandatory. You may choose to attach an image using the same process as detailed in bullet point 2 above.

To edit a Contact, hover the cursor over the row containing the contact details. The background of the row will change to a black “kevlar” pattern. Select the edit button at the right of a Contacts row and the fields will become highlighted to indicate that Exchange is ready for you make the amendments you want. Click **“Cancel”** if you decide to leave the details as they are and click **“Save”** to save the edited details. A Contact may be deleted by clicking the **x** in the red box at the far right of the Contact row.



When a Contact has been added and saved, the contact will be sent an email to advise them that they have been added and providing them with login and password details for access to a Fixture Window when they have been sent a link to one.

**From:** Exchange V3 Sportstec  
**Subject:** Exchange V3 -> Your new account has been created  
**Date:** 14 July 2010 10:05:51 AM AEST  
**To:** xxx

---

**This is a message from Sportstec Exchange V3.**  
**An account on Sportstec Exchange V3 has been created.**  
**Account Details:**

---

**Username:** xxx  
**Password:** 4  
**URL:** [exchange.sportstec.tv](http://exchange.sportstec.tv)

---

**Exchange V3**  
**Sportstec**

A contact may access the Exchange Server and amend his/her password and other contact details, such as Transfer preference and Language options.

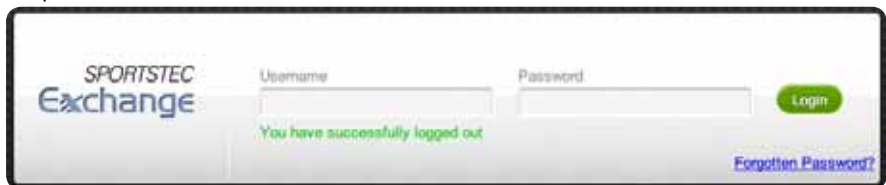
## Log Out

It is important that you formally Log Out to exit Exchange.

Click on "Log Out" in the Main Menu column. Exchange will check if this is your intention.



If you wish to proceed, click "Logout". Exchange will advise you when the Log Out process is completed.





Technology of Champions

Welcome to the world of Sportstec !

Coaches today are empowered with more coaching tools and options than ever before. As a world leader in sports technology we understand what it takes to be a champion. Our focus is on helping our clients make the winning difference, using all the benefits of leading- edge technology. The Sportstec range of sophisticated, innovative performance analysis products are developed and tested by specialists in coaching, sports science, training and medicine. We know and understand the rigorous demands of the sporting environment – and the importance of a competitive edge.

Contact Sportstec at [www.sportstec.com](http://www.sportstec.com) or email : [info@sportstec.com](mailto:info@sportstec.com)



### **ELITE**

SportsCode is the most powerful performance analysis software available today. SportsCode™ Elite changes the way you understand your game by giving you new insights into your team and your coaching style. SportsCode™ Elite changes performance outcomes by providing you with analysis tools unavailable anywhere else.



### **PRO**

If you're looking for a solution to help you with your pre game preparation, game day analysis and post game review and feedback then SportsCode Pro is the system for you. SportsCode Pro is the ultimate coaching tool, designed for the full range of performance disciplines.



### **PLAYER**

SportsCode Player is a 'play-only' application to be used in conjunction with SportsCode Pro or SportsCode Elite. SportsCode Player enables athletes to review edited SportsCode files on their own computer in their own time.



### **GAMEBREAKER**

SportsCode Gamebreaker is the entry level to the SportsCode range of products. Gamebreaker's simple interface means that coaches and players can scrutinize any area of the game without in-depth training or technical knowledge. Using this technology, you can record your performance onto a computer in real-time, then access, replay, edit, re-edit and archive it at the touch of a button.



## **GAMEBREAKER PLUS**

Gamebreaker Plus extends the power of your Gamebreaker software. Designed for people who are looking for greater depth in their analysis, Gamebreaker Plus could be just what you're looking for to take your analysis to the next level.



## **CODA**

CODA allows you to code without the video. You can code during a live event and use the data for statistical reports and analysis; or code from pre-recorded material – even DVDs. You can then export the coded data to Sportstec's SportsCode for your video review and more detailed analysis. CODA gives you the ability to increase your coverage at minimum costs.



## **iCODA**

Designed as the perfect complement to CODA for portability, iCODA runs on iPhone and iPod Touch for truly mobile data capture. Code anywhere, any place then download your data to CODA to analyse what you have captured, and even ,(by transferring the file to SportsCode,) link your coding to video.



## **MERCURY VOLLEY**

Sportstec Mercury is the smart volleyball solution that is proven, reliable and stable. Easy to use, flexible and powerful - Mercury helps volleyball teams stay at the forefront of the competition. Sophisticated video analysis capabilities are combined with industry leading statistical and trajectory analysis data.



## **MERCURY BEACH**

Developed specifically for beach volleyball coaches by one of their own, Mercury Beach has beach volleyball intelligence that makes it the smart coaching choice. It is its intelligent mapping of combinations, sets and systems that makes Mercury Beach so powerful.



## **MERCURY SCORESHEET**

Developed in close consultation with Volleyball Officials in France, Mercury Scoresheet is an important step for volleyball administration. Mercury Scoresheet is the perfect software for sports administration to update and validate key match events and scoring in professional leagues.



## **TRAK PERFORMANCE**

Using Trak Performance - coaches, fitness experts and other sports specialists can analyse any court or field game. Trak Performance recreates the dimensions of almost any playing ground so you can accurately compare the movement of individual players, particular player positions or movement profiles of different players.



## **STREAM**

Video streaming has never been easier than with SportsCode Stream! Built on a secure, reliable foundation, SportsCode Stream empowers coaches, players and fans to view and analyse video clips across the internet.



## **EXCHANGE**

Sportstec Exchange is a video sharing and management platform that is accessible online, meaning you can use it anytime, any place. Exchange cuts through the problems of conventional video sharing by creating an online library for you and your colleagues to upload, download and request video through.



## **CRONUS**

Information is only truly powerful when it can be collected, managed, manipulated and shared. Cronus is a powerful tool for knowledge and information management to give your team a competitive edge.